

Mary's Quick Strippie Quilt

This kit is based on a pattern by Mary Johnson. For more information see maryquilts.com/quick-strippie.

This kit contains:

5 strips @ 6.5" x WOF. These strips may be slightly smaller, depending on how much fabric was available.

6 strips @ 3" x WOF

10 strips @ 1.5" x WOF for sashing

Lay out the 6.5" strips in a pleasing order. There may be 3 of one color that should go at the top, bottom, and middle. There may be one odd one that should go in the middle. There may be two smaller ones that should go second and fourth. You decide how you want the quilt to look. If fabric is directional, be sure it is facing up.

Attach one sashing strip to one side of each of 2 @ 3" strips. These will be the top and bottom strip set, with the sashing toward the center of the quilt.

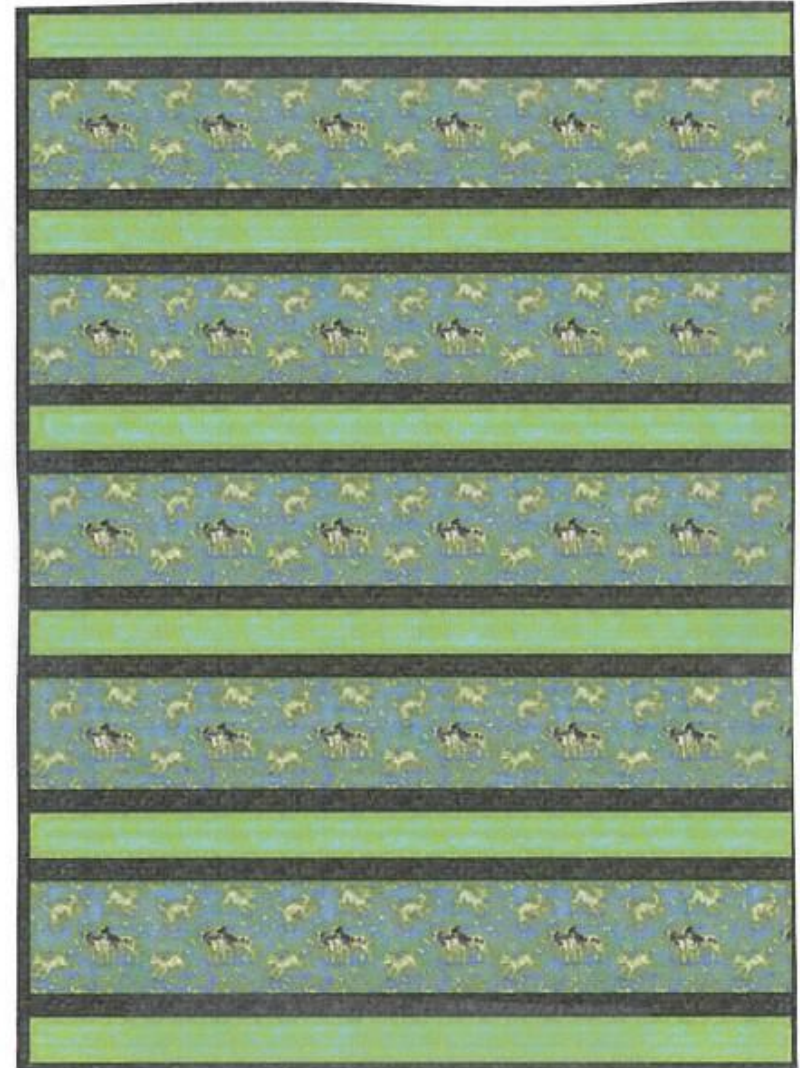
Attach sashing strips to each side of the other 4 @ 3" strips.

Place these strip sets between the 6.5" strips and sew together.

Once everything is stitched together, trim the sides so that they are straight.

Stay stitch around the outside edge of the quilt to keep the seams from popping open during quilting.

41" x 56"



A Kathleen's Collection Pattern for WSQ Charity Central