

This kit contains one of the following:

160 Bricks @ 3 ½" x 6 ½", blocks set 8 x 10, quilt measures 48" x 60".

240 Bricks @ 3 ½" x 6 ½", blocks set 10 x 12, quilt measures 60" x 72".

Whirligig Bricks

Bricks are in sets of 4 of one color and 4 of background. Stitch sets of color to sets of background to make 4 matching quarter Whirligig blocks. Stitch the quarter blocks together to make one Whirligig, see picture. Make 20 or 30 Whirligig blocks. Layout the blocks in a 4 x 5 or 5 x 6 grid until you have a pleasing design.

Rail Fence Bricks

Bricks are half light and half dark. Stitch sets of light and dark bricks together to make 80 or 120 blocks. Layout the blocks in an 8 x 10 or 10 x 12 grid so that light and dark zig zag across the quilt, see picture.

Basket Weave Bricks

Bricks are completely scrappy. Construct 80 or 120 blocks by sewing two bricks together long side to long side. Lay blocks out in an 8 x 10 or 10 x 12 grid. They should alternate vertical and horizontal, see picture.

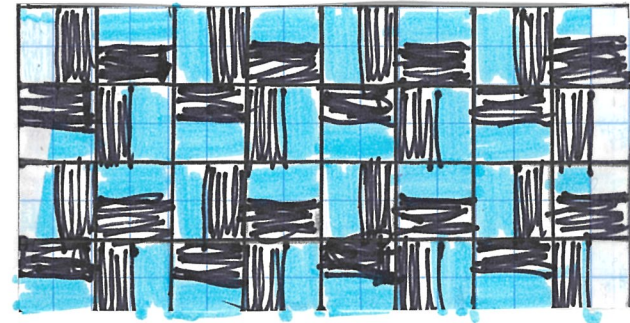
Stitch around the outside edge of completed quilt to prevent the seams from popping open before quilting. Add to or subtract from what is here. Add a border if you want. Use your imagination!

Thank you for piecing a Charity Central quilt.

Bricks

48" x 60" or 60" x 72"

Whirligig Bricks



Rail Fence Bricks



Basket Weave Bricks



A Kathleen's Collection Pattern for WSQ Charity Central